

Rotherham Learning Disability Partnership Board



Notes of the Meeting Friday 25th October 2013 10.05 am to 12.10 pm



Voting Members

At the meeting:

Bryan Adams	People's Representative (Co-chair) (left at 11.10 am)
Robert Parkin	People's Representative (Co-chair)
Jan Frost	Housing Services - RMBC
Shona McFarlane	Director of Health and Well Being – RMBC
Ann McMahon	Carer Representative
Alison Owen	Regional Forum Representative (arrived 10.25 am)
Jayne Price	Carer Representative ***new***
John Williams	Learning Disability Service

Who said they could not come to the meeting:

Linda Jarrold	Voluntary Action Rotherham
Patricia Russell	Councillor – RMBC
Kate Tufnell	Head of Contracts & Service Improvement - NHS-CCG
Brian Wood	Children & Young People's Service - RMBC

Who did not come to the meeting:

-

Sorry!

Non-Voting Members

At the meeting:

Sabi Akram	RAP
Sally Ferguson	Speakup
Sandra Grinnell	Learning Disability Service (arrived 11.05 am)

Also:

Stacey	Speakup Student
--------	-----------------

Taking the notes of the meeting:

Jo Frear	Learning Disability Service
----------	-----------------------------

Key:

NHS-CCG	NHS Clinical Commissioning Group
RMBC	Rotherham Metropolitan Borough Council
RAP	Rotherham Advocacy Partnerships
RDaSH	Rotherham Doncaster and South Humber NHS Foundation Trust



Robert opened the meeting and introductions were made. Robert asked people to turn off their mobiles or put them on silent for emergency calls.

1

Hello!

Introductions + Apologies

The meeting started with introductions being made (people said who they were).

Sorry

Jo then read out the people who said they could not come to the meeting (voting members) – see page 1.

2

Rotherham's Autism Self Evaluation



John told the meeting that Social Services across England have had to complete an assessment of their services for people with autism. We had hoped to be able to bring it to a Partnership Board before the deadline, however, this was not possible. Rotherham did send in its report by the deadline of 30th September 2013.



The Learning Disability Service and also the Mental Health Service work with people with autism. There are also people with autism not in these 2 services. The filling in of the report was led by the Learning Disability Service.

John went on to give an overview of the report. Things highlighted or talked about included:

- Information about people with autism is not currently collected. There are changes planned to be able to collect this information from next year. It is not that we don't know someone has autism, it is that currently the information cannot be gathered from our social care records.
- Autism training has been successfully provided this year. Rotherham people with autism have worked with the National Autistic Society, Learning Disability Service and the Clinical Commissioning Group (CCG) to develop and deliver this training.
- The Autism Group helped to provide the self-advocate stories. The group also read through the evaluation and agreed with it.



4 **People's Issues**



Alison gave a presentation at the meeting about the People's Parliament which was held on 15th October 2013 at the Galax Centre. The meeting had 3 workshops with questions about the Parliament. These questions included:

▪ **What do you like about coming to the Parliament?**

People said: *"To have your own voice and say"*
"Working together to make a difference"



▪ **What would you like the topics of the Parliament to be on?**

People said: *"Health Watch"*
"National Forum"
"Benefits"
"Health and Safety"



Sally said that Melanie Hall, Manager from HealthWatch, has been to Speakup and has said she will come to a Parliament. Jo advised that Melanie has been invited to our next Partnership Board meeting.

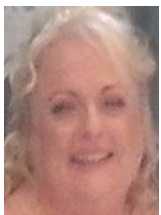
Shona said that the HealthWatch Chair sits on the Health and Well Being Board – this Board makes the big decisions. It is important that HealthWatch have contact with people with learning disabilities and Speakup, so that they can represent the views of all people – not just those in hospital. People need to have a voice.

5 **Carers' Issues**



Ann said that there have been several meetings taking place, including:

- the big Carers' meeting;
- a meeting of 6 Day Care representatives with Heather Mallan;
- a meeting with Councillor Doyle with 3 learning disability representatives and 1 Carers Corner representative.



Ann reported that one of the issues at these meetings has been about staffing. Families are worried about staffing levels in Day Centres. Jayne said that there is concern about Health & Safety at the day centres.



Shona told the meeting that day services have more challenges than they used to have. We are getting more and more people coming through to the service and at the same time people are living longer. We need to do more with what we have got and manage with what money is available. Where there are vacant posts, we are trying to recruit to them as quickly as we can.



Ann said that Carers Corner had been talked about at the meeting with Councillor Doyle, who had said that this is under review and he did not know the outcome at this stage. Shona said that the review is not finished yet – the Council are looking at how buildings are being used.



Jayne said that there is a survey about carer services on the Council website and she has completed it.



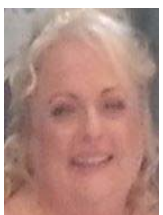
Ann said that Oak Close had been mentioned. John advised that there are regular family meetings taking place about Oak Close and these are well attended. John advised that anyone contacting Ann or Jayne about Oak Close issues should be asked to contact him, so that he can explain what is happening.



Sally told the meeting that Sports Development have money from bids for disability programmes. This may be something that could be used to support day services to get more people involved in sports.



Ann said there are concerns that not as many people are going to the Carers Forum meetings now. Jayne said that there may be issues around publicity and letting carers, including new carers, know about these meetings. We may need to look at different ways of letting people know about things like this.



Ann said that the possibility of having an electronic newsletter for carers to keep people updated about what is happening had been talked about at Councillor Doyle's meeting.

Jayne told the meeting that Fair's Fayre is taking place next week – on Wednesday 30th October 2013 at Magna.

Ann said that the Carers' Rights Day is on Friday 29th November 2013 but she is not sure what is happening in Rotherham yet.



- Action:**
- 5a Ann agreed to let Jayne know the dates of the different carer meetings.
 - 5b Shona agreed to ask Heather Mallan to contact Public Health re possibility of day services using Sports Development programmes.



There was a break for tea / coffee – 11.00 to 11.10 am.

3 Update on Care Quality Commission (CQC) Inspections of RDaSH

Sandra said she was sorry that she could not get to the meeting earlier, as she had to go to another meeting first.



Sandra told the meeting that she was going to give some feedback about a visit from the Care Quality Commission (CQC) last week. The CQC came to check that everything was okay in all RDaSH services and had visited the health part of the Learning Disability Service.



CQC had looked at quality and service user / carer experience of using the inpatient units (Rotherham's Assessment and Treatment Unit, called Rhymer's Court).

Sandra said that informal feedback was that we are doing OK (compliant). The inspector had commented about how nice, friendly and welcoming staff in the service had been to them.



- Action:**
- 3a Sandra agreed to bring formal feedback about the CQC inspection of Rhymer's Court to the Partnership Board, when the final report has been received.

6 Health and Social Care Self-Assessment Framework



John explained that every year we have had to complete a Health Self Assessment as well as a Partnership Board report. This year they have put the 2 assessments together into one big document. This document has been sent out with the agenda papers for people to see.



We have to complete the assessment by the end of November 2013 and work on this is taking place. Judi Kyte is leading on this from the Health side of the Learning Disability Service. We will be contacting people for information.

Sally told the Board that Judi has arranged a health session at Galax and will be using real life stories for the self-assessment from this event.



John said that some of the information is not easy to find, particularly the questions around Children's Services. Some of the questions are about things that we do not keep information about. There are also health questions (for example, about screening) which we will have to contact GPs / hospital about and we hope that they keep records about this.

People at the meeting were concerned about how big the self-assessment was – there is lots and lots of information and data that needs to be collected. It will be hard to go through and explain it all to the people who need to sign off the report.



It was also noted that the report now seems to be very much about health and not as much about how the service works.

Work is continuing to complete the self-assessment before the deadline and arrangements will be made for people to agree and sign it off.

7 Notes of the Last Meeting – 13th September 2013 + Matters Arising



John went through the notes of the last meeting to remind people what had happened. Everyone said that the notes from the meeting were okay, with the following amendment:

Page 1 – Friday 13th September ~~2012~~ **2013**.

7a People's Issues – Regional Forum



Sally said that the Forum on 1st October 2013 had been cancelled. It will now be held on 26th November 2013 and it was hoped that more groups will come to this.

Action:



7a Alison is to provide feedback about the Regional Forum to the Partnership Board.

7b Confidential Inquiry into Premature Deaths of People with Learning Disabilities



Jan commented that one of the issues in this report had been about people with a learning disability being underweight. However, this year's self-assessment is looking at people with a learning disability being overweight. There does not seem to be any links between the 2 reports.



Action:

7b Shona agreed to feed this comment back and say that we also monitor people who are underweight.

7c Carers' Rights Day – 29th November 2013

Information about what is happening in Rotherham for Carers' Rights Day is being looked into.



Action:

7c Ann and Jayne said they would support the day and let as many people as possible know about it.

7d Let's Talk Event

The Partnership Board talked about having a Let's Talk event in March / April 2014 to let people know about budgets / pressures / challenges faced by the Learning Disability Service.



Action:

7d The Partnership Board agreed to look at holding a Let's Talk event next year.

8 Any Other Business

8a Request to come to Partnership Board



The Partnership Board has received a request to come to one of its meetings from Dr Katherine Runswick-Cole, a researcher at Manchester Metropolitan University. Katherine is working with Speakup on a project looking at how people with learning disabilities are doing in the **Big Society**¹. Katherine is spending time in Rotherham to understand how people with learning disabilities are included in local decisions.

¹ The **Big Society** is about giving communities more powers, encouraging people to take an active role in their communities. It is about transferring power from Central to Local Government.



Action:
8a The Partnership Board agreed to Dr Katherine Runswick-Cole attending a meeting to observe.

8b **Carer Meetings**



Ann said that she has been approached by a carer who feels that as she is not using services (receives Direct Payments), she does not feel involved, is not attending meetings and does not get to know about things.

People at the meeting talked about this. It was suggested that there are a whole range of services that carers can access to get information including the Carers Centre, Speakup, Connect to Support, Partnership Board minutes (on line). It was felt that if the carer needed any support, then she could contact a Support Worker in the Direct Payments Team or the Learning Disability Service at Badsley Moor Lane.

9 **Date and Time of Next Meeting**



Friday 6th December 2013
@ 10.00 am



Robert closed the meeting and thanked people for their time.

LDS/JFr/PB251013
(07.10.13)

